

New

Hybrid Root SEAL

Perfect Root Canal Sealing from the Apex to the Crown

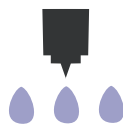


Introducing the selfetching HRS Root Canal Sealer based on the technology of Super-Bond C&B,
- Dual curing (chemical & light curing)
- Self-etching formula hybridizes the canal walls to prevent leakage (4-META)

Hybrid Root SEAL

simple preparation:

1 spoon of radiopaque powder + 3 drops of liquid + mixing



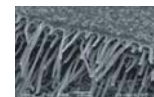
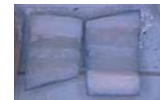
Advantages :

- Immediate sealing of root canal through light curing in 20 sec. !!
- Preparation of Post cementing 10 min. after sealing possible
- Ideal working time : until 35 minutes !!
- Creates Hybrid Layer with surrounding dentin
- tight bonding to Gutta Percha

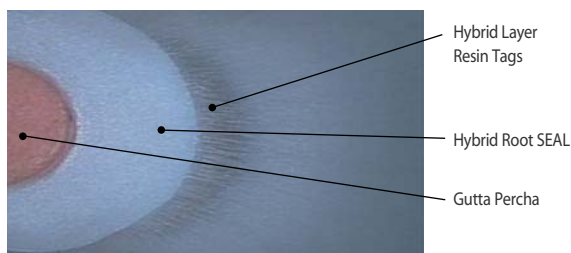
Hybrid Root SEAL bonds to Gutta Percha and Resilon

Hybrid Root SEAL seals

no color penetration after 5000 cycles
(rinsed with hypochlorite)



A REAL HYBRID LAYER



Bonding to Gutta Percha !!



Hybrid Root SEAL overview :

- improved sealing quality
- easy handling
- ideal working time
- extraordinary Biocompatibility
- low polymerisation shrinkage

Kit #7480 includes:

liquid 4,5ml, powder 5g, 1 spoon,
1 spatula, 1 mixing block

